



Internal Quality Assurance Cell

Student Satisfaction Survey on Teaching Learning Process (2020-21)

1. How much of the syllabus was covered in the class?

4 – 85 to 100%	3 – 70 to 84%	2 – 55 to 69%	1 – 30 to 54%	0 – Below 30%
----------------	---------------	---------------	---------------	---------------

2. How well did the teachers prepare for the classes?

4 – Thoroughly	3 – Satisfactorily	2 – Poorly	1 – Indifferently	0 – Won't teach at all
----------------	--------------------	------------	-------------------	------------------------

3. How well were the teachers able to communicate?

4 – Always effective	3 – Sometimes effective	2 – Just satisfactorily	1 – Generally ineffective	0 – Very poor communication
----------------------	-------------------------	-------------------------	---------------------------	-----------------------------

4. The teacher's approach to teaching can best be described as

4 – Excellent	3 – Very good	2 – Good	1 – Fair	0 – Poor
---------------	---------------	----------	----------	----------

5. Fairness of the internal evaluation process by the teachers.

4 – Always fair	3 – Usually fair	2 – Sometimes unfair	1 – Usually unfair	0 – Unfair
-----------------	------------------	----------------------	--------------------	------------

6. Was your performance in assignments discussed with you?

4 – Every time	3 – Usually	2 – Occasionally/Sometimes	1 – Rarely	0 – Never
----------------	-------------	----------------------------	------------	-----------

7. The institute takes active interest in promoting internship, student exchange, field visit opportunities for students.

4 – Regularly	3 – Often	2 – Sometimes	1 – Rarely	0 – Never
---------------	-----------	---------------	------------	-----------

8. The teaching and mentoring process in your institution facilitates you in cognitive, social and emotional growth.

4 – Significantly	3 – Very well	2 – Moderately	1 – Marginally	0 – Not at all
-------------------	---------------	----------------	----------------	----------------

9. The institution provides multiple opportunities to learn and grow.

4 – Strongly agree	3 – Agree	2 – Neutral	1 – Disagree	0 – Strongly disagree
--------------------	-----------	-------------	--------------	-----------------------

10. Teachers inform you about your expected competencies, course outcomes and program outcomes.

4 – Every time	3 – Usually	2 – Occasionally/Sometimes	1 – Rarely	0 – Never
----------------	-------------	----------------------------	------------	-----------

11. Your mentor does a necessary follow-up with an assigned task to you.

4 – Every time	3 – Usually	2 – Sometimes	1 – Rarely	0 – I don't have a mentor
----------------	-------------	---------------	------------	---------------------------



Internal Quality Assurance Cell

Student Satisfaction Survey on Teaching Learning Process (2020-21)

12. The teachers illustrate the concepts through examples and applications.

4 – Every time	3 – Usually	2 – Occasionally/Sometimes	1 – Rarely	0 – Never
----------------	-------------	----------------------------	------------	-----------

13. The teachers identify your strengths and encourage you with providing right level of challenges.

4 – Fully	3 – Reasonably	2 – Partially	1 – Slightly	0 – Unable to
-----------	----------------	---------------	--------------	---------------

14. Teachers are able to identify your weaknesses and help you to overcome them.

4 – Every time	3 – Usually	2 – Occasionally/Sometimes	1 – Rarely	0 – Never
----------------	-------------	----------------------------	------------	-----------

15. The institution makes effort to engage students in the monitoring, review and continuous quality improvement of the teaching learning process.

4 – Strongly agree	3 – Agree	2 – Neutral	1 – Disagree	0 – Strongly disagree
--------------------	-----------	-------------	--------------	-----------------------

16. The institute/ teachers use student centric methods, such as experiential learning, participative learning and problem-solving methodologies for enhancing learning experiences.

4 – To a great extent	3 – Moderate	2 – Some what	1 – Very little	0 – Not at all
-----------------------	--------------	---------------	-----------------	----------------

17. Teachers encourage you to participate in extracurricular activities.

4 – Strongly agree	3 – Agree	2 – Neutral	1 – Disagree	0 – Strongly disagree
--------------------	-----------	-------------	--------------	-----------------------

18. Efforts are made by the institute/ teachers to inculcate soft skills, life skills and employability skills to make you ready for the world of work.

4 – To a great extent	3 – Moderate	2 – Some what	1 – Very little	0 – Not at all
-----------------------	--------------	---------------	-----------------	----------------

19. What percentage of teachers use ICT tools such as LCD projector, Multimedia, etc. while teaching.

4 – Above 90%	3 – 70 – 89%	2 – 50 – 69%	1 – 30 – 49%	0 – Below 29%
---------------	--------------	--------------	--------------	---------------

20. The overall quality of teaching-learning process in your institute is very good.

4 – Strongly agree	3 – Agree	2 – Neutral	1 – Disagree	0 – Strongly disagree
--------------------	-----------	-------------	--------------	-----------------------

21. Give three observation / suggestions to improve the overall teaching – learning experience in your institution.

a) _____

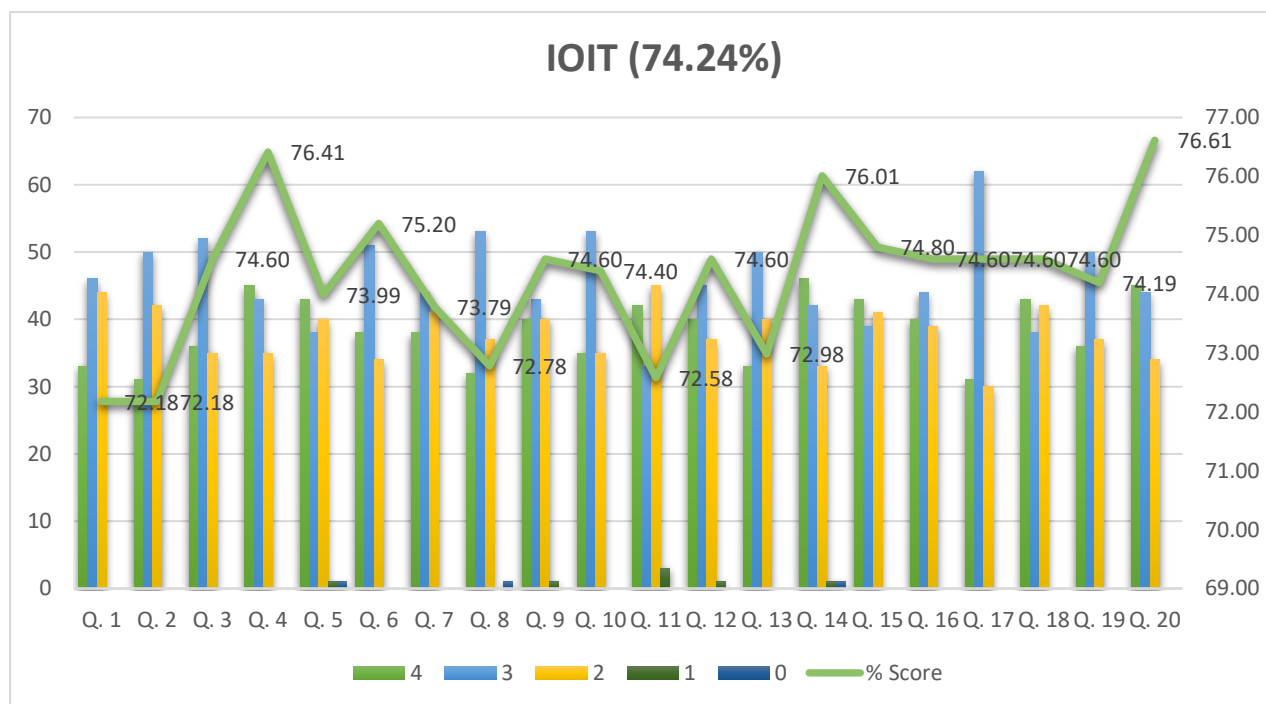
b) _____



Internal Quality Assurance Cell Student Satisfaction Survey on Teaching Learning Process (2020-21)

Analysis

A. Overall performance of the Institute



B. General remarks:

- Multiple Choice Question (MCQ) banks should be shared
- Network issues lead to missing of lectures
- Sessions for preparation of campus placement to be increased
- Guidance for preparation of GATE exam to be provided

C. Action Taken:

Based on the suggestions given by students, it is decided to

1. Prepare short videos based on important concepts and share through institute's YouTube channel so that students can watch them as per their convenience and learn the concepts.
2. Three MCQ based unit tests (1 test based on 2 units) to be conducted for practice of online exams.
3. Discuss solutions of the questions asked in previous GATE exams after completion of relevant topic by the teachers.

