



## Internal Quality Assurance Cell

### Student Satisfaction Survey on Teaching Learning Process (2020-21)

1. How much of the syllabus was covered in the class?

4 – 85 to 100%	3 – 70 to 84%	2 – 55 to 69%	1 – 30 to 54%	0 – Below 30%
----------------	---------------	---------------	---------------	---------------

2. How well did the teachers prepare for the classes?

4 – Thoroughly	3 – Satisfactorily	2 – Poorly	1 – Indifferently	0 – Won't teach at all
----------------	--------------------	------------	-------------------	------------------------

3. How well were the teachers able to communicate?

4 – Always effective	3 – Sometimes effective	2 – Just satisfactorily	1 – Generally ineffective	0 – Very poor communication
----------------------	-------------------------	-------------------------	---------------------------	-----------------------------

4. The teacher's approach to teaching can best be described as

4 – Excellent	3 – Very good	2 – Good	1 – Fair	0 – Poor
---------------	---------------	----------	----------	----------

5. Fairness of the internal evaluation process by the teachers.

4 – Always fair	3 – Usually fair	2 – Sometimes unfair	1 – Usually unfair	0 – Unfair
-----------------	------------------	----------------------	--------------------	------------

6. Was your performance in assignments discussed with you?

4 – Every time	3 – Usually	2 – Occasionally/Sometimes	1 – Rarely	0 – Never
----------------	-------------	----------------------------	------------	-----------

7. The institute takes active interest in promoting internship, student exchange, field visit opportunities for students.

4 – Regularly	3 – Often	2 – Sometimes	1 – Rarely	0 – Never
---------------	-----------	---------------	------------	-----------

8. The teaching and mentoring process in your institution facilitates you in cognitive, social and emotional growth.

4 – Significantly	3 – Very well	2 – Moderately	1 – Marginally	0 – Not at all
-------------------	---------------	----------------	----------------	----------------

9. The institution provides multiple opportunities to learn and grow.

4 – Strongly agree	3 – Agree	2 – Neutral	1 – Disagree	0 – Strongly disagree
--------------------	-----------	-------------	--------------	-----------------------

10. Teachers inform you about your expected competencies, course outcomes and program outcomes.

4 – Every time	3 – Usually	2 – Occasionally/Sometimes	1 – Rarely	0 – Never
----------------	-------------	----------------------------	------------	-----------

11. Your mentor does a necessary follow-up with an assigned task to you.

4 – Every time	3 – Usually	2 – Sometimes	1 – Rarely	0 – I don't have a mentor
----------------	-------------	---------------	------------	---------------------------



## Internal Quality Assurance Cell

### Student Satisfaction Survey on Teaching Learning Process (2020-21)

12. The teachers illustrate the concepts through examples and applications.

4 – Every time	3 – Usually	2 – Occasionally/Sometimes	1 – Rarely	0 – Never
----------------	-------------	----------------------------	------------	-----------

13. The teachers identify your strengths and encourage you with providing right level of challenges.

4 – Fully	3 – Reasonably	2 – Partially	1 – Slightly	0 – Unable to
-----------	----------------	---------------	--------------	---------------

14. Teachers are able to identify your weaknesses and help you to overcome them.

4 – Every time	3 – Usually	2 – Occasionally/Sometimes	1 – Rarely	0 – Never
----------------	-------------	----------------------------	------------	-----------

15. The institution makes effort to engage students in the monitoring, review and continuous quality improvement of the teaching learning process.

4 – Strongly agree	3 – Agree	2 – Neutral	1 – Disagree	0 – Strongly disagree
--------------------	-----------	-------------	--------------	-----------------------

16. The institute/ teachers use student centric methods, such as experiential learning, participative learning and problem-solving methodologies for enhancing learning experiences.

4 – To a great extent	3 – Moderate	2 – Some what	1 – Very little	0 – Not at all
-----------------------	--------------	---------------	-----------------	----------------

17. Teachers encourage you to participate in extracurricular activities.

4 – Strongly agree	3 – Agree	2 – Neutral	1 – Disagree	0 – Strongly disagree
--------------------	-----------	-------------	--------------	-----------------------

18. Efforts are made by the institute/ teachers to inculcate soft skills, life skills and employability skills to make you ready for the world of work.

4 – To a great extent	3 – Moderate	2 – Some what	1 – Very little	0 – Not at all
-----------------------	--------------	---------------	-----------------	----------------

19. What percentage of teachers use ICT tools such as LCD projector, Multimedia, etc. while teaching.

4 – Above 90%	3 – 70 – 89%	2 – 50 – 69%	1 – 30 – 49%	0 – Below 29%
---------------	--------------	--------------	--------------	---------------

20. The overall quality of teaching-learning process in your institute is very good.

4 – Strongly agree	3 – Agree	2 – Neutral	1 – Disagree	0 – Strongly disagree
--------------------	-----------	-------------	--------------	-----------------------

21. Give three observation / suggestions to improve the overall teaching – learning experience in your institution.

a) \_\_\_\_\_

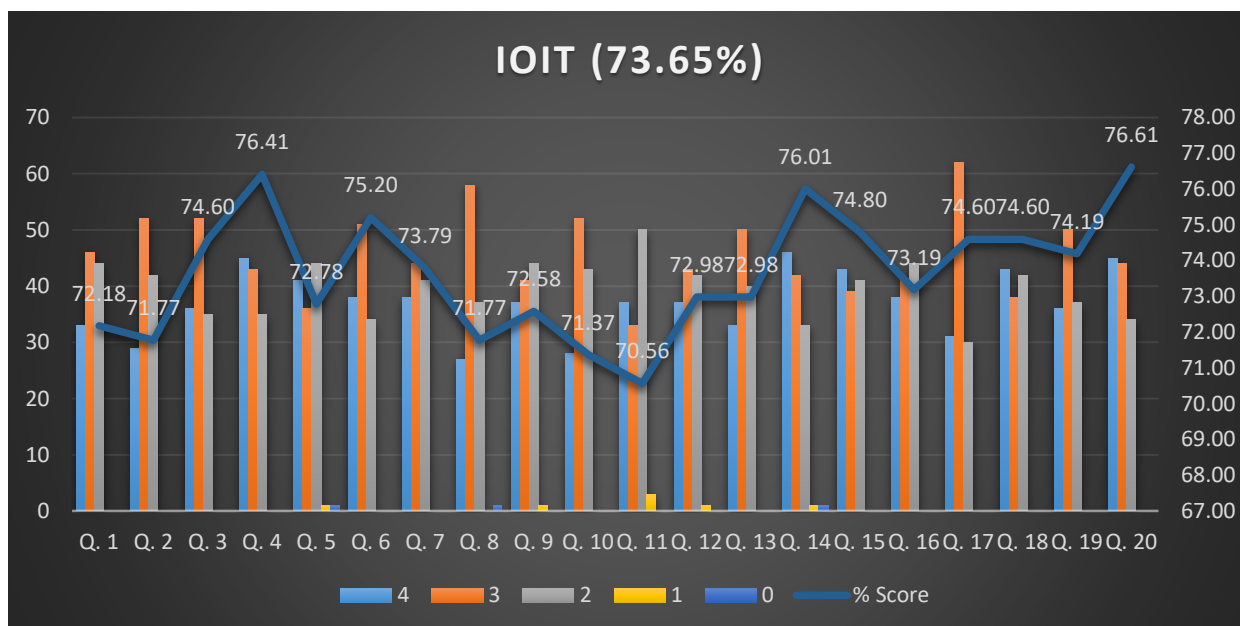
b) \_\_\_\_\_



**Internal Quality Assurance Cell**  
**Student Satisfaction Survey on Teaching Learning Process (2020-21)**

**Result Analysis**

**A. Overall performance of the Institute**



**B. General remarks:**

- More practice of solving MCQs should be there
- Practical experience should be increased through hands on sessions
- Along with the practical from syllabus project based assignments should be given to understand real life applications
- Previous paper should be discussed
- Group discussion needs to be conducted

**C. Action Taken:**

Based on the suggestions given by students, it is decided to give mini project and activity based assignments instead of Q&A type assignments from Sem. 1 of AY 2020-21.

Department wise performance analysis was presented to the HoDs in order to find out the reason/s in case of less feedback percentage and initiate necessary corrective actions.